

MAUI HIKINA HULIĀMAHI I N I T I A T I V E



Please comment on our
DRAFT Proposal by 10/31/23

Scan the QR code to learn more
and provide any feedback!



EAST MAUI COMMUNITY INPUT NEEDED MAKAI MANAGEMENT DRAFT PROPOSAL

Maui Hikina Huliāmahi is a community-led initiative supported by the Maui Nui Makai Network to strengthen makai management across the four moku of East Maui: Ko'olau, Hāna, Kīpahulu and Kaupō.

Our initiative began in 2019, when several East Maui communities expressed their commitment to work together and developed makai management plans to restore and protect the resources that sustain East Maui's culture and people. In June of 2023, communities of all four moku met to agree on a regional plan grounded in traditional knowledge and sound science.

This is a community-drafted proposal that is now being circulated for review and feedback from Ko'olau to Kaupō. Your input is critical to its success!

For more info and to give your input, scan the QR code to the left or visit:
www.mauinui.net/maui-hikina-huliamahi by October 31, 2023!

East Maui Makai Management Draft Proposal

Goal 1: Mālama 'Āina Protect and restore ahupua'a that feed and sustain us.

Objective 1.1: Increase size and abundance of targeted marine species so that harvest is plentiful for this and future generations.

Objective 1.2: Increase compliance with the Kumu Kānāwai, code of conduct, and Lawai'a Pono rules for harvest based on traditional and customary practices and respect the regenerative capacity of marine ecosystems.

Objective 1.3: Reduce human impacts to coastal areas – including fishing grounds, nursery areas, sources of freshwater, and mauka connectivity.

Objective 1.4: Manage invasive species, mauka to makai, to improve ecosystem health.

Goal 2: 'Ike Hawai'i Gather kūpuna knowledge; practice and perpetuate our traditions, lifestyle, and kuleana.

Objective 2.1: Younger generations, kamali'i and 'ōpio, are actively involved in learning from kūpuna and mākuā, living our traditions, caring for our ahupua'a, and planning for the future.

Objective 2.2: Residents and visitors demonstrate increased respect and understanding for the community and our way of life, and share responsibility to mālama 'āina.

Kumu Kānāwai: Code of Conduct

These are not rules, but rather informal, common sense pono fishing practices we'd like to see everyone respect in Maui Hikina.

- Know your state fishing rules
- Abide by access policies of the area
- Check in with kūpuna of the area to ask permission out of respect
- Respect/know the conditions of the ocean, be safe, fish with a buddy
- Respect this sacred place and the people who live here
- Protect Hawaiian cultural wahi pana sites ('iwi, ahu, ko'a, heiau)
- Mālama your catch – eat what you catch, don't waste, dispose of fish guts and parts properly, not in the water by people
- Know the spawning seasons – do not gather during spawning
- Eat all kinds of fish, not just the targeted fish – change your pallet
- Catch ta'ape and to'au to give native fish a break
- Keep dogs leashed and clean up their mess! No feed stray animals
- Leave the place better than you found it, give back
- Take rubbish, lead, and line with you
- No posting/geotagging catch to social media for exploiting resources
- No giveaway kipuka fishing spots
- Encourage 3" minimum throw net mesh size
- Limit of 2 casting poles per person
- No night diving
- 'Opihi – no take of Ko'ele (below the waterline)
- 'Opihi – keep moving, don't take all from one area
- Limu – clip the limu, never pull the roots so limu can regrow
- "Easy access" fishing should be reserved for kūpuna
- If possible, have kūpuna present if fishing for kūpuna
- Māhele with kūpuna and those who cannot fish
- Communicate with other families, lawai'a, and gatherers if you fished an area to prevent overharvest

Gear Rules

Bag net	Bag net prohibited for akule
Surround Gill net	Minimum mesh size 2¾"
Throw net	Minimum mesh size 2¾"
Hook-and-line	Max casting 2 lines deployed from shoreline with max 2 hook per line, per person, each hook having only one point, except that double or treble hooks are allowed with lures; one bait pole
SCUBA/ underwater breathing apparatus	No take or possession of marine life while using gear except for akule net handling

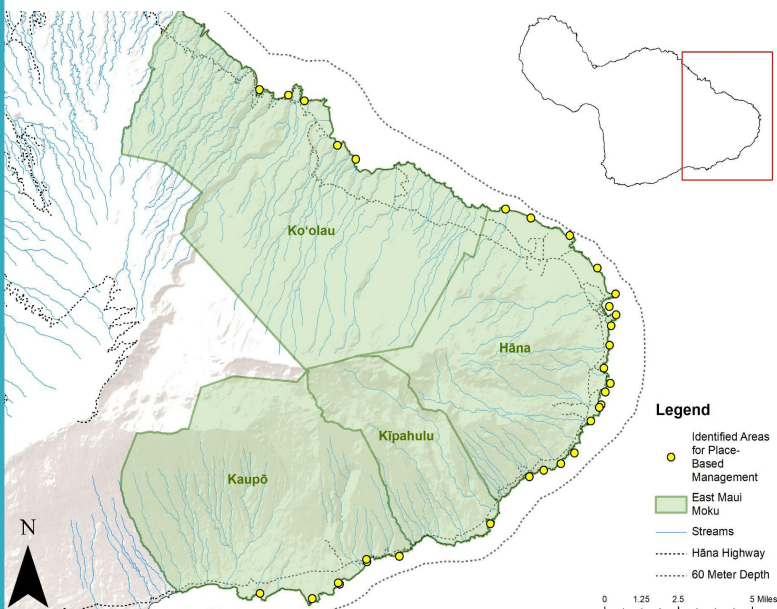
Further Discussion Needed

Night diving	From shore only (Hāna & Ke'ānae) No night diving at Hāmoa and Haneo'o No take or possession of marine life while night diving (Kīpahulu)
Speargun	No take with speargun in water 40 ft deep or less (Ke'ānae); three prong in the shallow water
Commercial	No take/possession of nearshore marine life except for introduced species including roi, ta'ape, and to'au (and akule in Ko'olau moku) No aquarium take of all marine life

Place-Based Management

Some special areas in Maui Hikina are of interest for additional management, on top of the proposed gear and species rules shared. Additional management could address:

1. Heavy use of area
2. Protect traditional fishing rights
3. Protect endangered honu ea nesting grounds
4. Manage limu, 'opihi, or other important species
5. Promote traditional practices and ahupua'a management



Species Rules

All fin fish total bag limit	Limit 10 combined (except akule, āholehole, roi, ta'ape, and to'au) per person, per day
 'Ōmilu Bluefin Trevally <i>Caranx melampygus</i>	Bag limit: 1
 Ulua All species <i>Carangidae</i> family	Bag limit: 1
 Kala Bluespine Unicornfish <i>Naso unicornis</i>	Bag limit: 2 Size limit: 14" (state) min - 20" max
 'Ōpelu kala Sleek Unicornfish <i>Naso hexacanthus</i>	Bag limit: 2 Size limit: 16" (state) min - 20" max
 Kole Goldring Surgeonfish <i>Ctenochaetus strigosus</i>	Size limit: 6" min Seasonal - no take during Jan-May
 Uhu Parrotfishes <i>Scaridae</i> family	No spear take at night
 Kūmū Whitesaddle Goatfish <i>Parupeneus porphyreus</i>	No spear take at night
 Moi Pacific Threadfin <i>Polydactylus sexfilis</i>	Size limit: 11" (state) min - 18" max Closed season: May - September
 'Opihi All species <i>Cellana</i> genus	Bag limit: 40 pieces (shell on) Size limit: ¼" min (state) - 2" max No take freediving No take from watercraft No take at night
 Ula Spiny Lobster, <i>Palinuridae</i> family Slipper Lobster, <i>Scyllaridae</i> family	Bag limit: 5 (Kīpahulu-2, Hāmoa-2) Closed season: May (state) - Sept. No commercial take
 Uku Blue-green Snapper <i>Aprion virescens</i>	Bag limit: 2 Size limit: 10lb min
 7-11 Crab Spotted Reef Crab <i>Carpilius maculatus</i>	Bag limit: 5
 Limu All Native Species	No take limu with holdfast/roots attached Bag limit: ½ pound mix bag total
 Akule Bigeye Scad <i>Selar crumenophthalmus</i>	No commercial take (Kīpahulu, Hāna & Kaupō)

